

Friends of San Pablo Bay NWR

Francesca Demngen

Founder and 3rd President

U.S. Fish & Wildlife Service

Pacific Southwest Region

2015 Joint Training

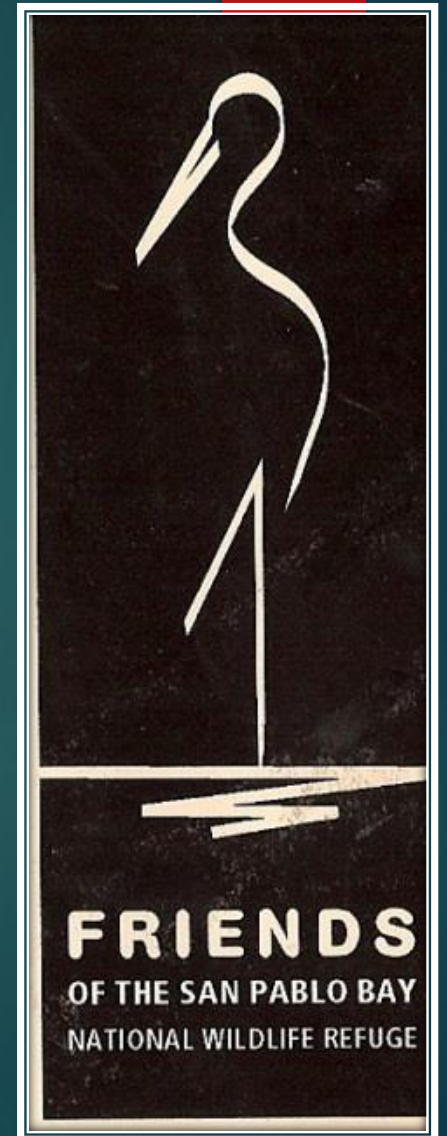
Refuge Friends & Visitor Services

Friends of San Pablo Bay Marin Islands Antioch Dunes



Agenda

- ▶ Who we are & what we do
 - ▶ It all started with Cullinan – it's about the land
 - ▶ Refuge support: financial capacity, volunteers
 - ▶ Community outreach, education, activities
 - ▶ Board composition and membership
- ▶ What we do best: Published 2 children's books
- ▶ Biggest issue: time & energy for capacity building
 - ▶ Building and sustaining critical mass
- ▶ Lessons Learned

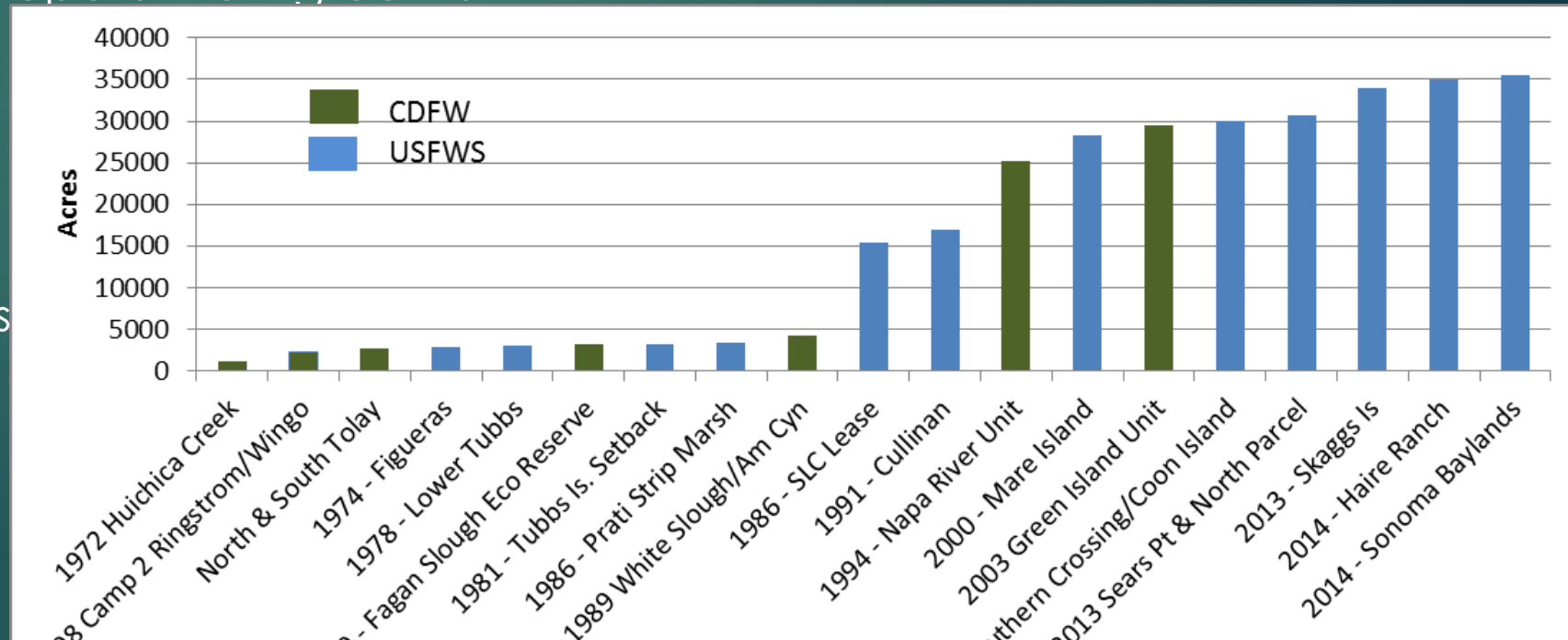


Friends and Refuge Grew Together

- ▶ 1971 – Refuge authorized
- ▶ 1974 – Figueras Tract, first land
- ▶ 1982 – Vallejoans for Cost Efficient Growth
- ▶ 1994 – Building 505 campaign, Interagency Committee
- ▶ 2003 – Filed 501c3 Non-profit Incorporation papers
- ▶ 2009 – Received signed Cooperative Agreement
- ▶ 2015 – Cullinan Breached

1850s = 40K ac North Bay Wetlands

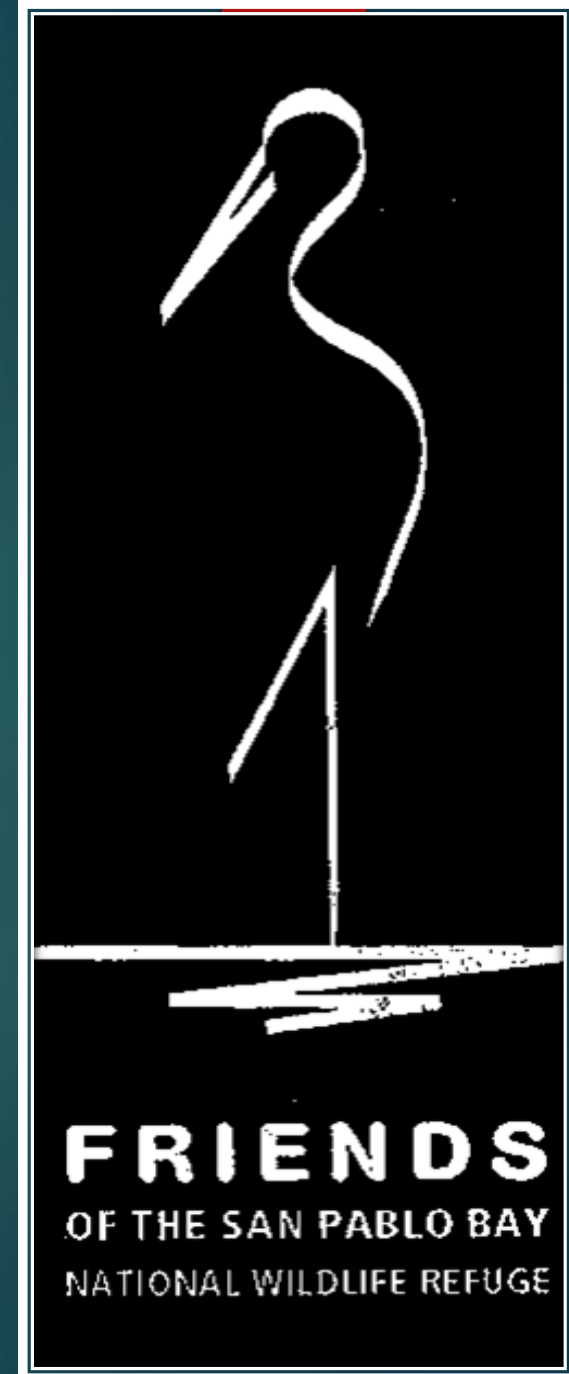
2015 = 35,515 ac CDFW & USFWS
22,046 ac USFWS



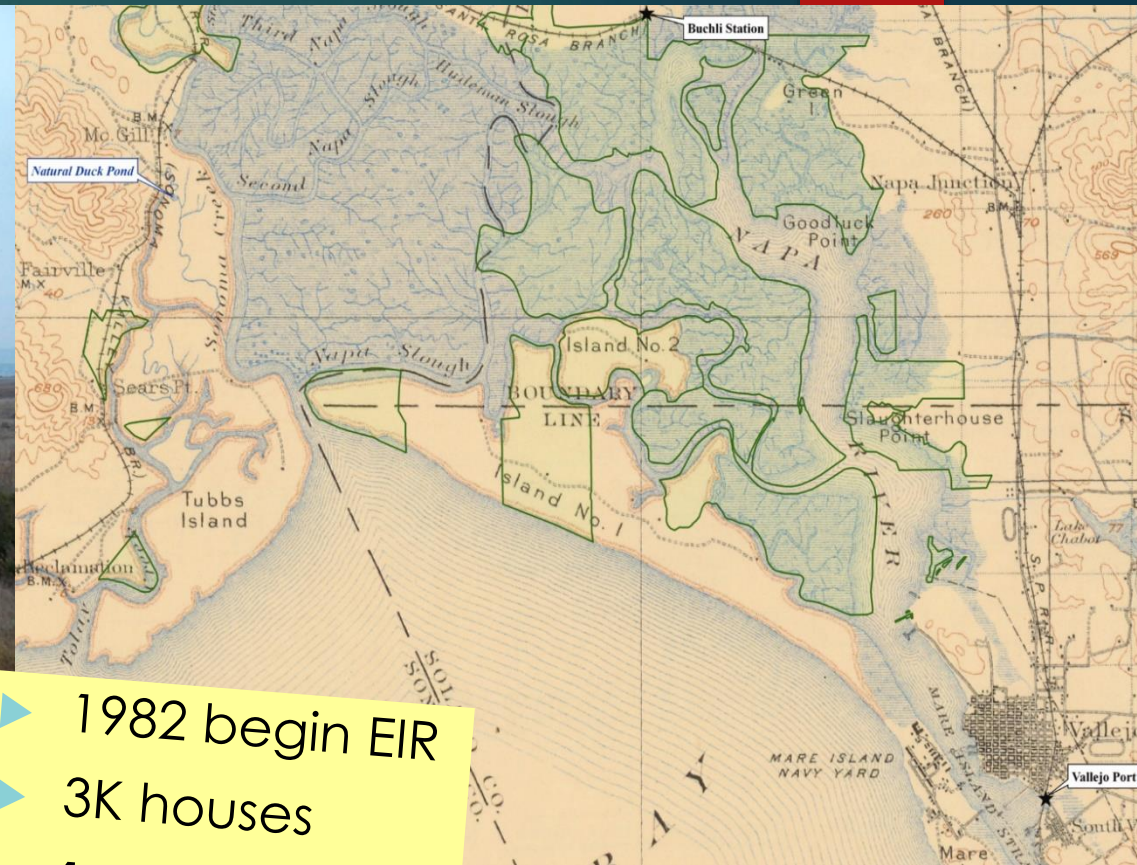
Friends of San Pablo Bay NWR

BOARD of DIRECTORS

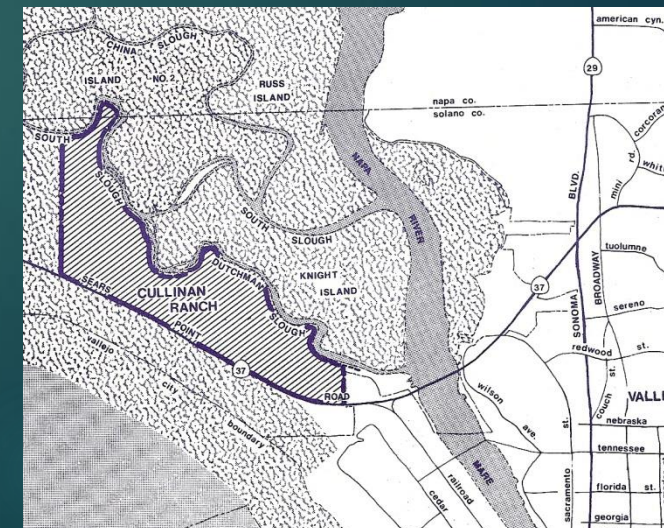
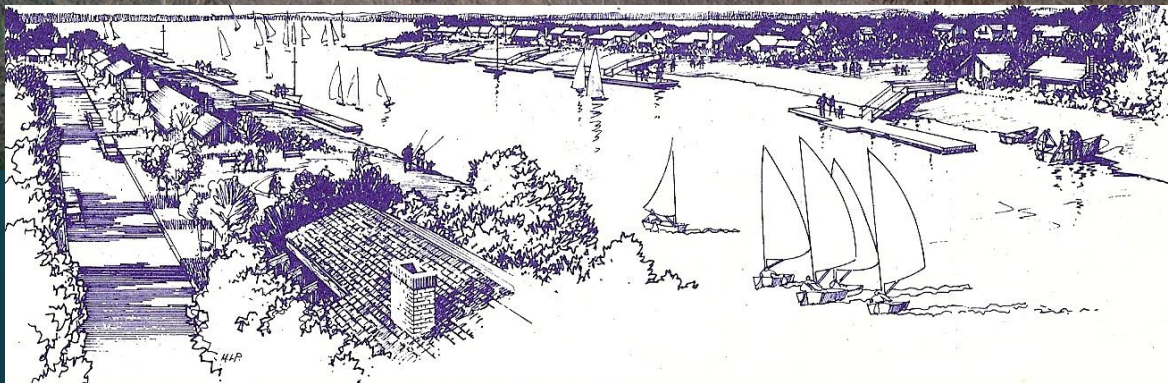
- ▶ 10 members
 - ▶ Half retired (attorney, planner, biologists, engineer, environmental educator, council member, water quality manager)
 - ▶ 4 men, 6 women
- ▶ 5 meetings/year
 - ▶ 6:00 pm to 8:00 pm
 - ▶ Some drive 30+ miles at rush hour to attend
 - ▶ Some participate by phone
 - ▶ Refuge manager attends and gives report
- ▶ Annual meeting, required in bylaws
- ▶ Annual BBQ at refuge headquarters
- ▶ General Membership = ~25



Cullinan Ranch (1,493 ac)



- ▶ 1982 begin EIR
- ▶ 3K houses
- ▶ 1,500 condos
- ▶ 1,700 berths
- ▶ 60 ac business
- ▶ 1991 \$7M; into Refuge
- ▶ Jan.6, 2015 Breach



Cullinan Ranch

From oat hay field to National Wildlife Refuge

Friends transformed opposition
to development into
advocacy for the Refuge.



Breach event Jan.6, 2015



Marin Islands NWR



Business, Volunteers, Friends and Refuge staff



National Guard, Refuge staff, & Friends



Congressman Jared Huffman, Refuge staff, & Friends

Antioch Dunes NWR

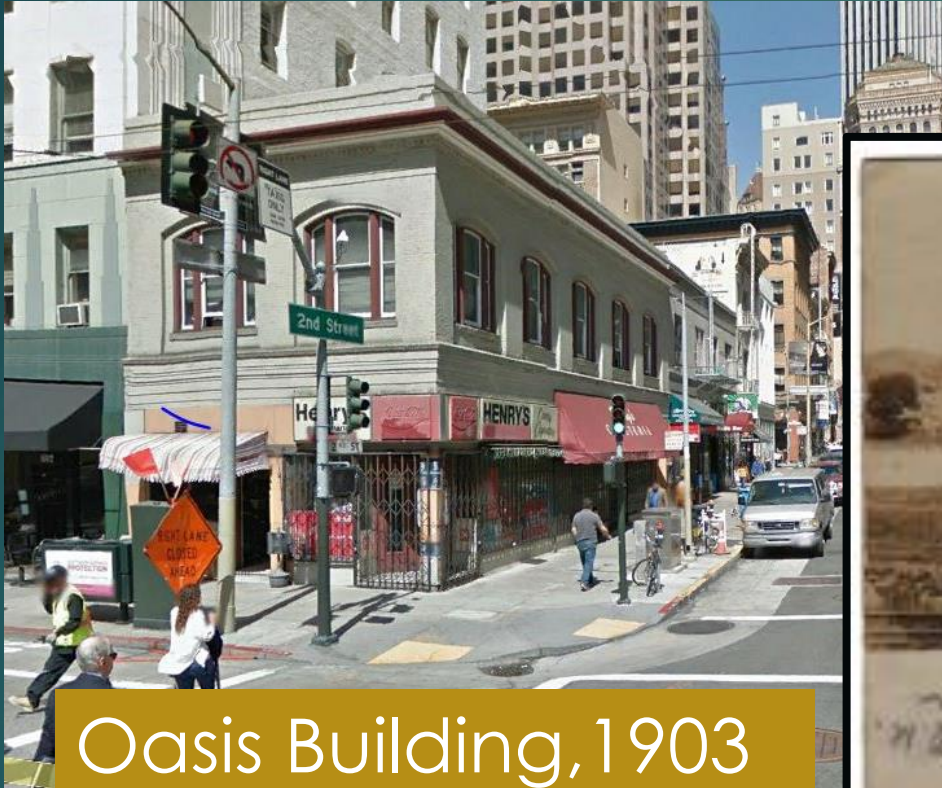
Fledgling Friends Group

- ▶ Docents for School groups
- ▶ Volunteers for counting butterflies
- ▶ Shared site history for S&S
- ▶ Upcoming Bioblitz



Friends of the
Antioch Dunes

Holland Sandstone Brick Yard (1903)



Oasis Building, 1903



Credits: Dan Mosier and Google Earth

- 42 acres of river front
- >1million bricks between 1903-07
- Sand mining after kiln fuel shortage

What we do: in our NWRs & Beyond

Theme #1 Advocacy

- Fairs, festivals, field trips
- Bay Nature magazine – Restoration Insert
- National Friends Committee
- Support letters: SLT Cosco Busan grant application



Theme #2 Financial Management

- Marin Islands Interns: Contracting/ General Services signatures took 17 months
- Antioch Dunes grants: CCFWC, NFWF – planting & env ed
- Pipe fund: nesting black oystercatcher signs, motion detection cameras

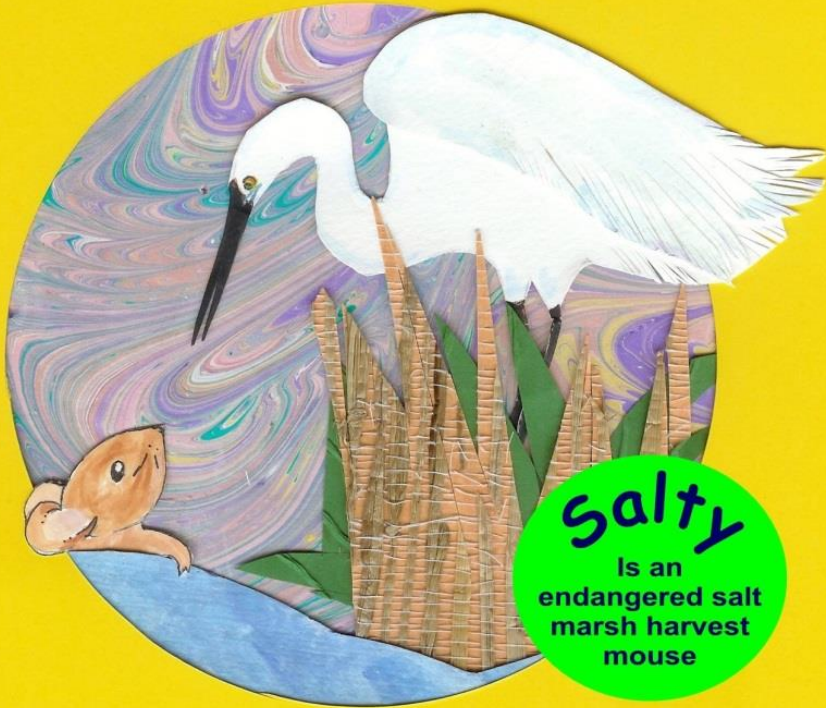


Endangered Species Outreach

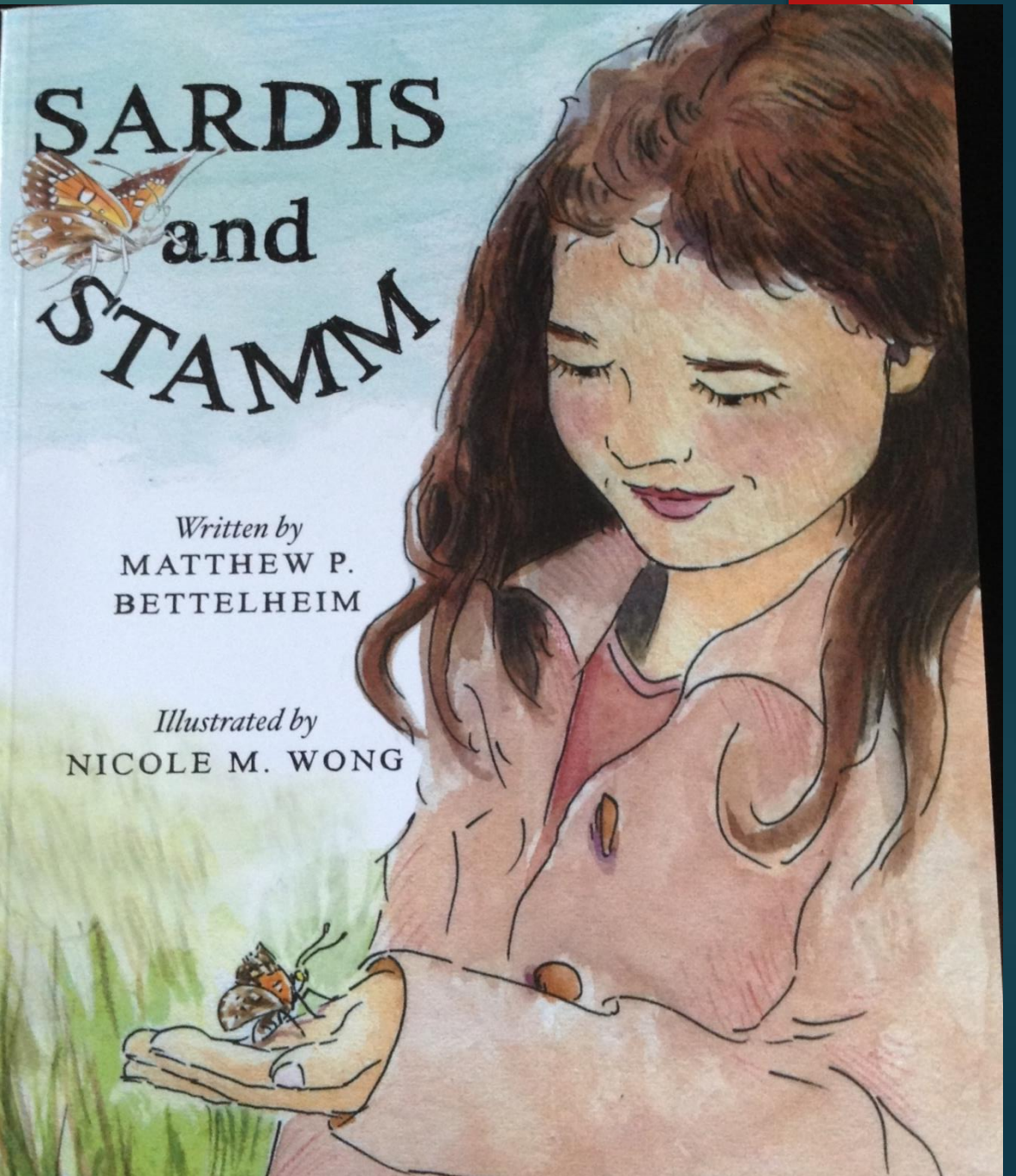
2nd printing of Salty, 2,000 copies Sept. 2013

Sardis and Stamm, 2,000 copies Dec. 2013

A Home For Salty



Written by Stephanie Stuve-Bodeen
Illustrated by Diane Adams





The Friends support the Refuge

San Francisco Bay Flyway Festival
Vallejo on Mare Island



Construct Shade
Structure



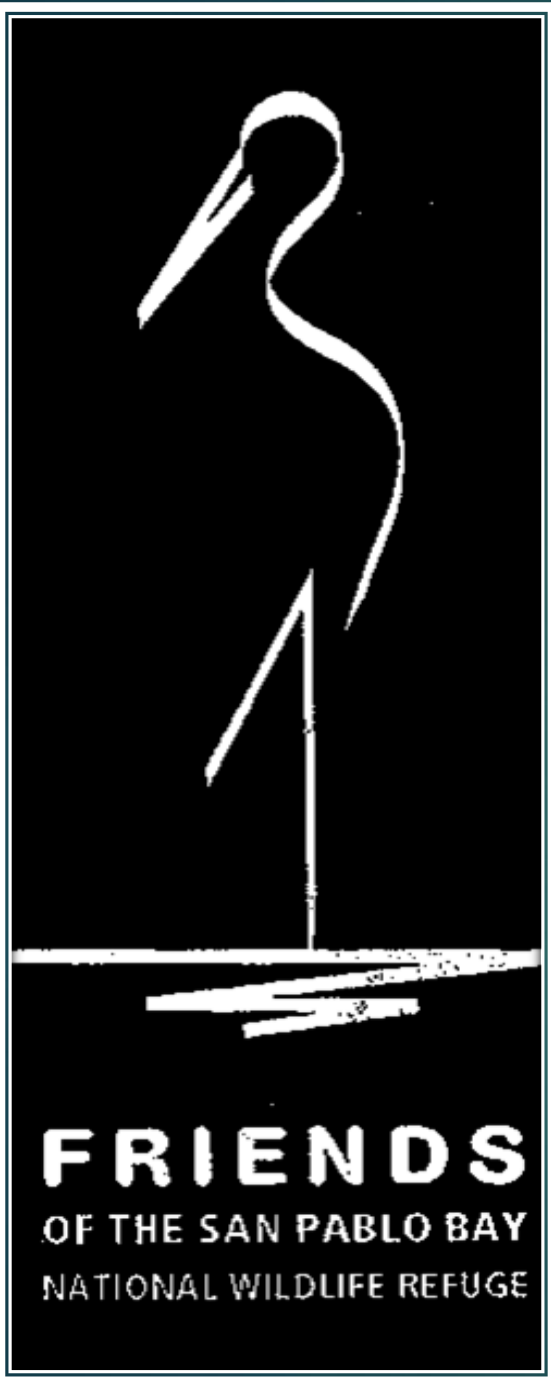
City of Fremont
Chinese New Years event

Antioch Dunes Tour
Book Release Celebration



Lessons Learned

- ▶ It takes lots more time than one thinks
- ▶ There is no substitute for good leadership
- ▶ Identify the gate keepers, dynasty builders & power players
 - ▶ Work with them if possible, go around when necessary, leave if you need to
- ▶ People need to feel appreciated and that progress is being made
- ▶ Snacks help
- ▶ Remember to celebrate even tiny victories and especially remember to have fun



THANK YOU



Distribution

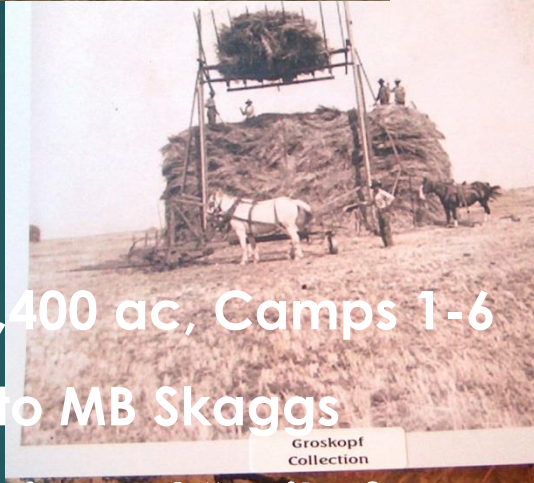
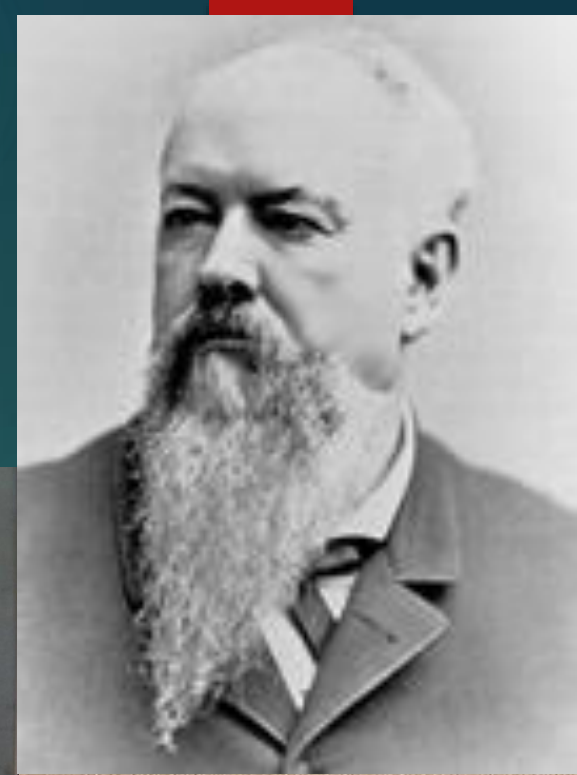
Bookstores, environmental education centers, museums, libraries

- The Storyteller
- Berkeley Ecology Center
- Lindsay Museum
- Bohart Museum of Entomology
- Tilden Environmental Center
- Hayward Shoreline Interpretive Center
- Oakland Zoo
- At the Refuge & From the Friends
 - Phone orders with a credit card
 - Mail order with a check



Haying the North Bay

Post 1906 quake, 5 tons hay/month barged to City for horses hauling supplies



- Bought 10,400 ac, Camps 1-6
- 1938 sold to MB Skaggs
- 1940 Navy issued "writ of taking"
- Hayed by Jones's grandson til 1965



COURTESY SONOMA VALLEY HISTORICAL SOCIETY, GROSKOPF COLLECTION